

# **USER MANUAL**

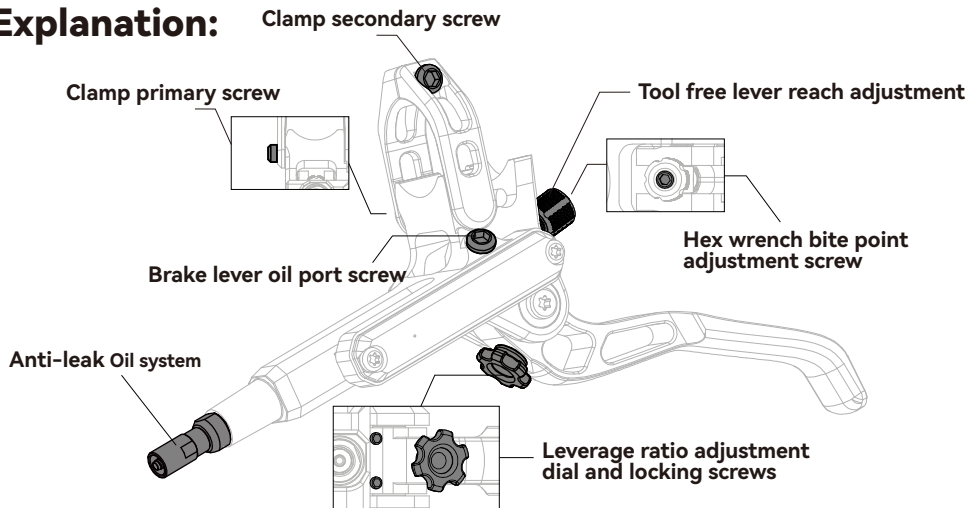
**LHP-S4**



Product Name: Lewis LHP(Axial Cylinder)

Product Type: Hydraulic Brake

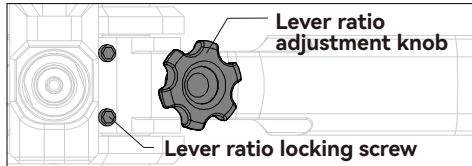
## Usage Explanation:



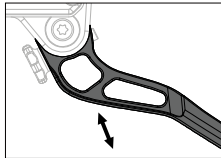
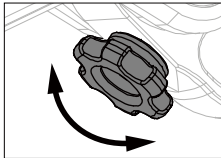


Product Name: Lewis LHP(Axial Cylinder)

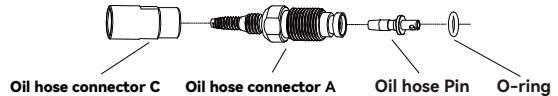
Product Type: Hydraulic Brake



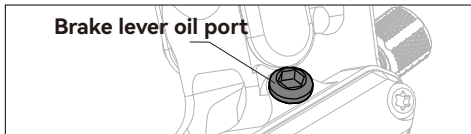
- Loosen the **leverage ratio locking screws** to adjust to your preference using the **leverage ratio adjustment knob**; after adjustment, **tighten the locking screws (1N·m)**.
- The further the lever blade is positioned outward, the softer the feel (the larger the leverage ratio); please adjust according to personal preference.



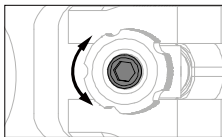
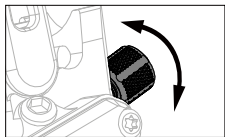
- LEWIS **Anti-Leak Oil System** can be unscrewed and pulled out without fear of oil spill allowing easy routing for internal cables and easy maintenance.



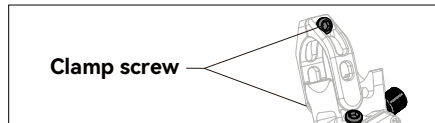
- **Anti-leak oil system fittings** : After disassembly, remove both **Oil hose connector A** and **Oil hose connector C** to proceed with the disassembly and assembly of the internal wiring within the frame. After 2-3 re-installation cycles, it is recommended to cut off a section of the hydraulic pipe and utilize the unused portion of the pipe for installation to ensure sealing integrity.



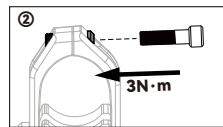
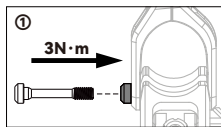
- Remove the **brake lever oil port screw** and use an M5 connector when bleeding; removing the oil reservoir cap may result in leakage and is not needed for bleeding (**screw torque is 3N·m**).
- The brake lever reach distance can be freely adjusted by hand-turning the lever reach adjustment knob, and the bite point can be adjusted using a 2mm hex wrench.



- When bleeding or topping up with oil, please set the bite point to the maximum and pump the brake lever several times to ensure oil flow.



- When installing the clamp, make sure the screw holes are aligned to prevent thread stripping or related safety hazards caused by misalignment of the screw threads.
- Both screws of the clamp must be pre-tightened during installation. Do not tighten the screw on one side when the other side is **without a screw (a 3mm hex wrench is used for all clamp installations)**.

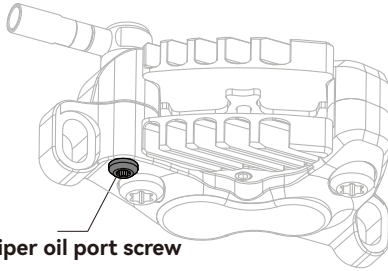


- When installing the clamp, **first tighten the main clamp screw (3N·m), then tighten the secondary clamp screw (3N·m)**.



Product Name: Lewis LHP(Axial Cylinder)

Product Type: Hydraulic Brake



**Caliper oil port screw**

- When bleeding the brake, please place the syringe at the caliper and a bleeding funnel at the lever, please avoid using a syringe for bleeding at the lever.
- The torque for both the **brake lever oil port screw and the caliper oil port screw is 3N·m.**
- When adjusting the brake lever travel and bite point, please make sure you are happy with the feel of the brake before attempting difficult riding.
- Our brakes are designed to be used with **MINERAL OIL.**
- During installation, we suggest resetting the caliper piston (clean any dirt if necessary) to effectively avoid disc rubbing.
- Before installation, please remove holding pads from the caliper, insert the included brake pads, and ensure the fixing screws and retaining clips are in place. **DO NOT** over tighten the brake pad holding screw.
- Our brakes come with a 3 years warranty. If you have any questions or uncertainties, please feel free to contact us.

## Safety Information

---

- Please read and review all information carefully before use and always follow the procedures stated in the User's Manual.
- Use caution when using a larger disc brake rotor as it provides a higher braking force.
- The disc brake rotor is sharp enough to inflict severe injury to your fingers if they come in contact with the rotating rotor. The brake may not work properly if the brake lining is contaminated with oil or grease.
- Stop using the brake if the disc brake rotor becomes worn down to thickness limit.
- If fluid leaks occur, immediately stop using the brakes and consult a dealer or an agency.
- Vapor lock may occur if the brakes are applied continuously.
- The wheel may lock if the front brake is applied too strongly.
- The braking distance will be longer in humid weather.
- This brake is designed for downhill or free riding, with higher braking force compared to other brakes. If not familiar with this brake, accidents may occur that can cause serious injury or even death.
- If mineral oil comes into contact with eyes and skin, it may result in irritation. If in contact with eyes, rinse with water and receive immediate medical assistance. Inhalation of vapors or mineral oil mist may cause nausea.
- As the brake disc wears out, the space in the oil circuit increases. Please pay attention to replenishing the oil.
- DO NOT dismantle or modify this product.
- Please keep the User's Manual for future reference.

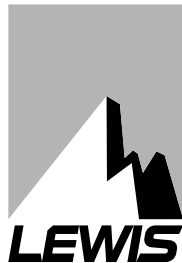
## Safety Information

---

Check the following before riding the bicycle.

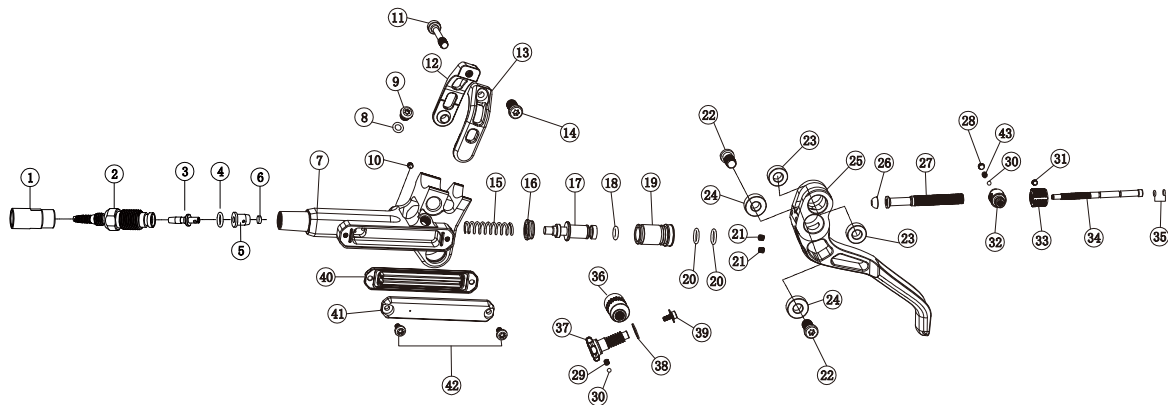
- Is the brake oil leaking?
- Do the front and rear brakes work correctly?
- Does each brake lining have a thickness of 0.5 mm or more?
- Is the disc brake rotor cracked or deformed?
- Are there any abnormal noises?
- Is the brake lever secure?
- Is the brake lever peeling or cracking?

If you notice any potential problem, please contact the place of purchase or a bicycle dealer.



# **THCHNICAL MANUAL**

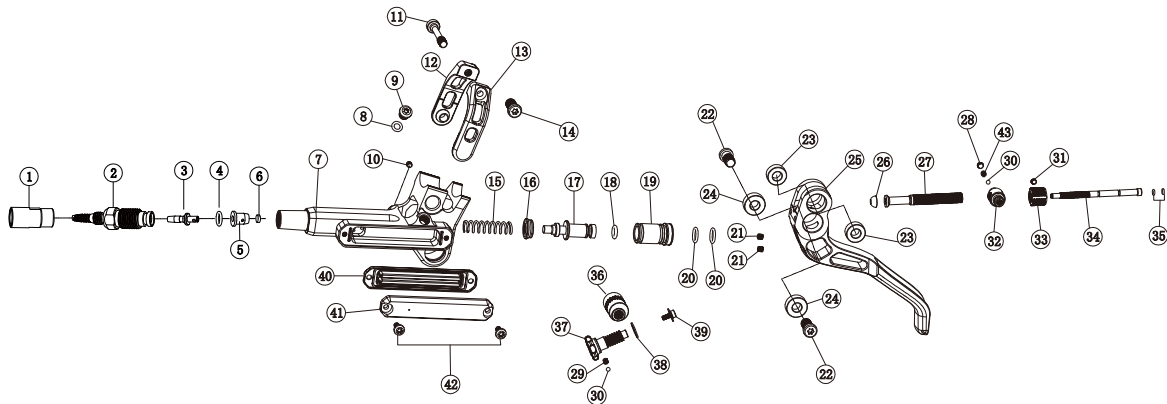
# LHP-S4 Brake Lever Diagram





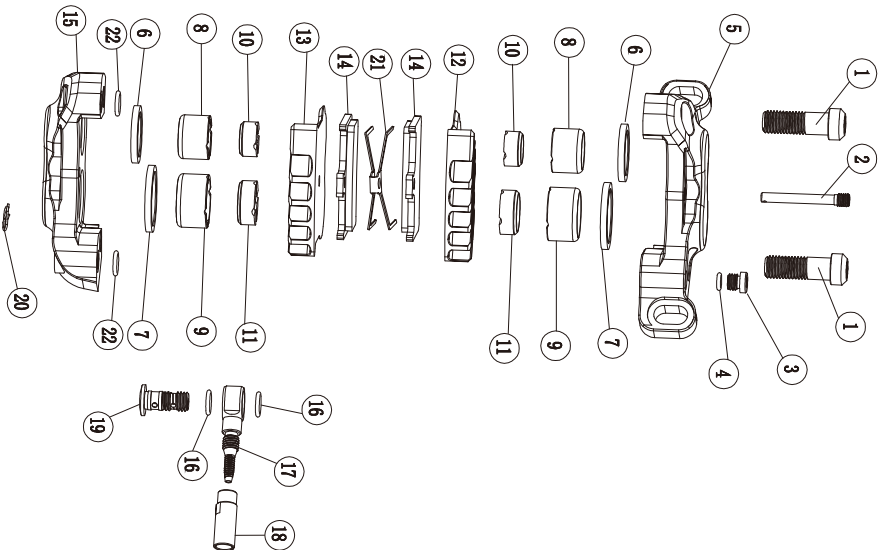
Serial No.	Component Name	Quantity	Serial No.	Component Name	Quantity	Serial No.	Component Name	Quantity
1	Oil hose connector C	1	18	Piston Seal Rear	1	35	O-Ring	2
2	Oil hose connector A	1	19	Piston Sleeve	1	36	Bearing Bracket	1
3	Oil hose Pin	1	20	O-Ring	2	37	Leverage Raito Adjuster	1
4	O-Ring	1	21	Set Screw	2	38	Gasket	1
5	Tubing Support Sleeve	1	22	Bolt	2	39	Washer Head Screw	1
6	Round Magnet	1	23	Bearing 1	2	40	Diaphragm	1
7	Bracket	1	24	Bearing 2	2	41	Oil Reservoir Cover	1
8	O-Ring	1	25	Lever Blade	1	42	Screw	2
9	Oil Plug Screw	1	26	Ball Head Cap	1	43	Spring	1
10	Set Screw	1	27	Piston Rod	1	<ul style="list-style-type: none"> <li>● It is not recommended for individual users to fully disassemble the brake lever. If necessary, please familiarize yourself with the components in the diagram, and use official disassembly videos as a reference.</li> <li>● When disassembling and maintaining the brake, please use professional tools and cleaning agents. After cleaning, rinse thoroughly with running water to remove residual cleaning agents, and assemble after thorough drying.</li> </ul>		
11	Clamp Bolt (Long)	1	28	Set Screw	1			
12	Clamp Lower Cover	1	29	Spring	1			
13	Clamp upper Cover	1	30	Ball	2			
14	Clamp bolt (short)	1	31	Set Screw	1			
15	Spring	1	32	Piston Rod	1			
16	Piston Seal Front	1	33	Adjustment knob	1			
17	Piston	1	34	Piston Rod Inner Shaft	1			

# LHP-S4 Brake Lever Diagram



Serial No.	Component Number	Quantity	Serial No.	Component Number	Quantity	Serial No.	Component Number	Quantity
1	CJT15	1	18	FE08040715	1	35	COX140308	2
2	CZT14	1	19	CTZ04	1	36	CZK04	1
3	CGT03	1	20	COX060801	2	37	CLS39	1
4	COX030615	1	21	FE29004040	2	38	FW01310030	1
5	CZT02	1	22	CLS17_LV	2	39	FE20002050	1
6	FD09030010	1	23	FZ01051004F	2	40	CMF15	1
7	CBT24-92 R/L	1	24	FZ01051104F	2	41	CBT25	1
8	COX315512	1	25	CSB14	1	42	FE32542560	2
9	CLS30	1	26	CQT01	1	43	CTH12	1
10	CLS62	1	27	CZX14	1	<ul style="list-style-type: none"> <li>● It is not recommended for individual users to fully disassemble the brake lever. If necessary, please familiarize yourself with the components in the diagram, and use official disassembly videos as a reference.</li> <li>● When disassembling and maintaining the brake, please use professional tools and cleaning agents. After cleaning, rinse thoroughly with running water to remove residual cleaning agents, and assemble after thorough drying.</li> </ul>		
11	CLS22_SUS	1	28	FE29003015	1			
12	CSK01	1	29	FQ01058010	1			
13	CSK02	1	30	FZ07008010	2			
14	FE25060414	1	31	FE29002525	1			
15	CTH01	1	32	CZX13	1			
16	CMF24_HNBR	1	33	CZX16	1			
17	CHS27	1	34	CZX15	1			

# LHP-S4 Caliper Diagram



Serial No.	Component Name	Component Number	Quantity
1	Caliper Lock Bolt	CLST19_17	2
2	Pad Pin	CLSS2_SUS	1
3	Oil Plug Screw	CLSS0	1
4	O-Ring	COX315512	1
5	Upper Shell	CBT52	1
6	Piston Seal 14	CMF05_HNBR	2
7	Piston Seal 17	CMF06_HNBR	2
8	Piston 14MM	CHS11	2
9	Piston 17MM	CHS12	2
10	Piston Pad 14MM	CCT02	2
11	Piston Pad 17MM	CCT03	2
12	Upper Cooling Fin	GRP08	1
13	Lower Cooling Fin	GRP09	1
14	Brake Pads	CSP06	2
15	Lower Shell	CBT53	1
16	O-Ring	COX560812	2
17	Oil Hose Connector	CJT02	1
18	Oil Hose Connector	CJT03	1
19	Oil Plug Screw	CLSD2_17	1
20	Pad Pin	CTH09	1
21	Brake Pads Clip	CTP04	1
22	O-Ring	COX050701	2

- It is not recommended for individual users to fully disassemble the caliper. If necessary, please familiarize yourself with the components in the diagram, and use official disassembly videos as a reference. When assembling, remove any old sealing adhesive residue and use new cylinder seal grease for installation.
- When disassembling and maintaining the brake, please use professional tools and cleaning agents. After cleaning, rinse thoroughly with running water to remove residual cleaning agents, and assemble after thorough drying.



**LEWIS**

**ALL FOR  
CYCLING  
EXPERIENCE**

POWERED BY:



Website: [www.lewisbike.com](http://www.lewisbike.com)

