

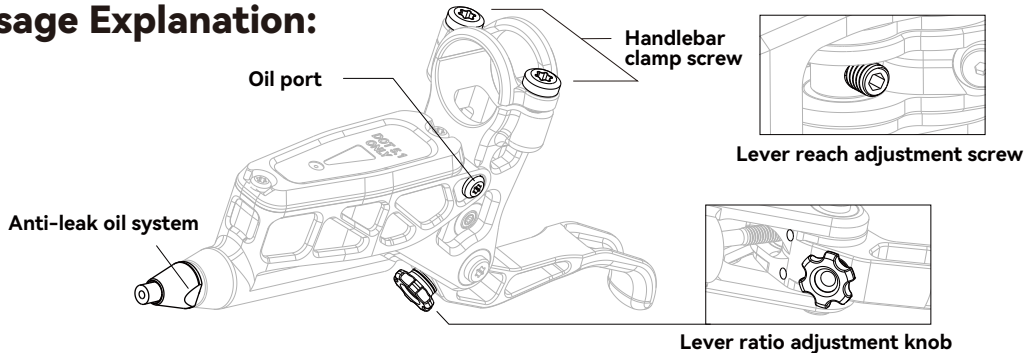
USER MANUAL



Product Name: Lewis EP8+ (Axial Cylinder)

Product Type: Hydraulic Brake

Usage Explanation:

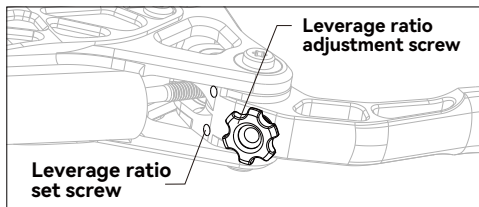


- Remove the brake oil port screw and use an M5 connector for bleeding. Warning! Removing the oil reservoir cover may result in leakage.
- The EP8+ is the ambidextrous design for both left and right hand, with the same oil ports on both sides of the brake handle.
- During handlebar installation ensure the threads are correctly aligned to avoid any thread stripping.
- use a 2mm Allen key to adjust the lever reach, adjusting the leverage ratio will affect the lever reach. Typically, adjustments need to be made at the same time



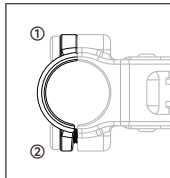
Product Name: **Lewis EP8+ (Axial Cylinder)**

Product Type: **Hydraulic Brake**

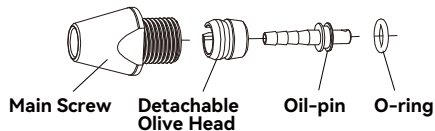
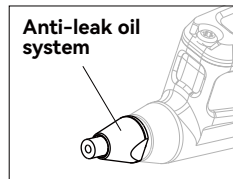


- Use 1.5mm Allen Key to loosen the **leverage ratio fixing screw**, you can use the **leverage ratio adjusting screw** to adjust the leverage ratio; **tighten the fixing screw** after the adjustment is completed.

- Use a T25 wrench to install the clamping ring. When installing the clamp, please **lock the thicker end ①**, then **lock the thinner end ②**, and the locking force of the clamp is uniformly 3 Nm..



- LEWIS Anti-leak oil system can be unscrewed and pulled out without fear of oil spill allowing easy routing for internal cables and easy maintenance.



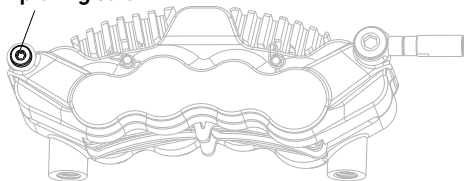
- After removal of the **anti-leak system** joint, it is necessary to remove the **O-ring, detachable olive head, and main screw** to allow installation of the cable through the internal routing of the frame. When reinstalling, it is necessary to connect the oil-pin and it's mate on the inside the braking handle. It is recommended to replace the **detachable olive head** after 2-3 uses. Spare olive heads are provided at the time of purchase.



Product Name: Lewis EP8+ (Axial Cylinder)

Product Type: Hydraulic Brake

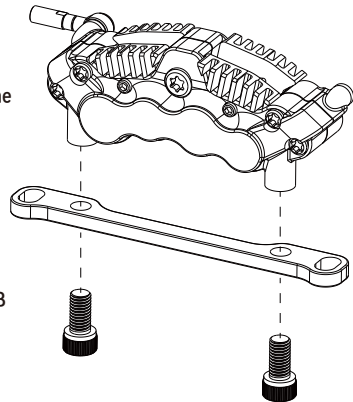
Clamp oiling screw



- The EP8+ uses DOT 5.1 fluid by default, when replacing other DOT fluids please strictly understand the characteristics of the oil used.
- It is recommended to return the clamp piston to its place when installing (please clean it in time if there is any dirt), which can effectively avoid rubbing the rotor.
- Please remove the pads from inside the clamp, install the supplied pads, and check that the rifling retaining screws and circlips are in place before loading.
- Our brakes come with a 3-year warranty, and you are welcome to contact us if you have any questions or uncertainties.

Caliper installation tutorial

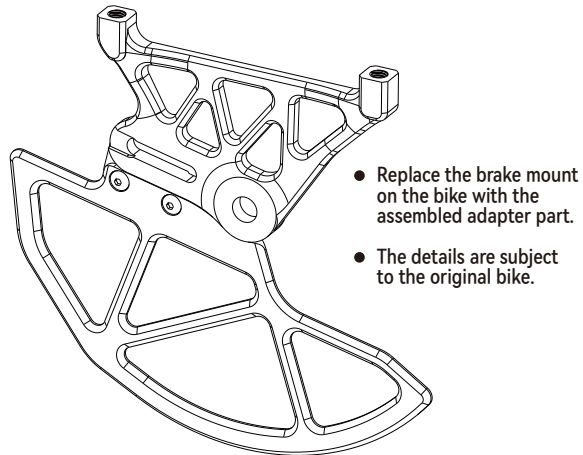
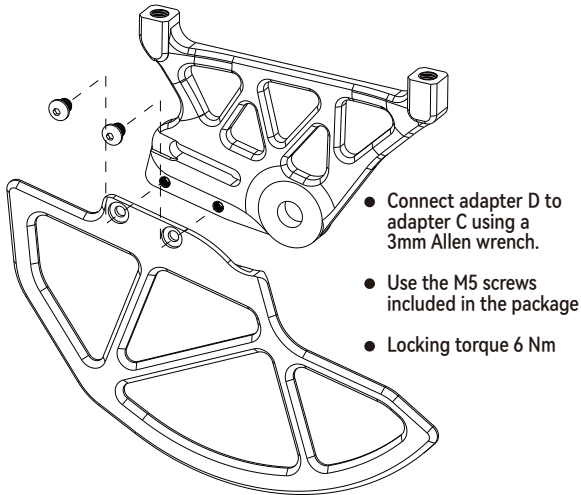
- Use a 6mm Allen key to connect the clamp to the adapter B
- Attachment with short m8 screws included in the package
- Locking torque 16 Nm
- Please note the orientation of adapter B





Product Name: **Lewis EP8+ (Axial Cylinder)**

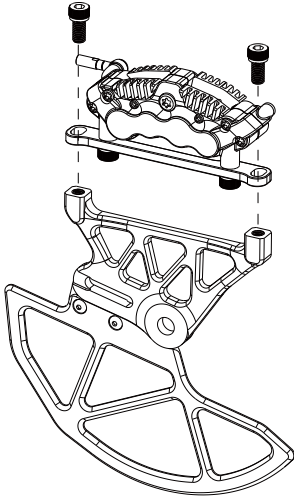
Product Type: **Hydraulic Brake**



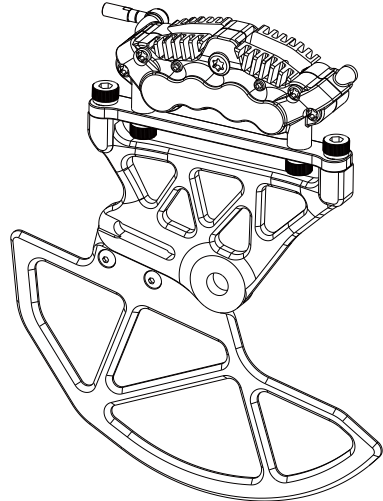


Product Name: **Lewis EP8+ (Axial Cylinder)**

Product Type: **Hydraulic Brake**



- Use a 6mm Allen Key to connect the assembled clamp to the adapter base
- Attachment with long m8 screws included in the package
- Locking torque 16 Nm



LEWIS is dedicated to designing and producing components that consistently remain at the forefront of the cycling industry. Through user data combined with our research and test results, we continuously optimize our products to best serve our customers. We sincerely invite users to report any issues they encounter during the use of our products, either via email or through after-sales feedback to create an unbeatable buying, riding, and after-sales service for everyone. You can follow our various contact methods and multimedia accounts to access technical information or news on new and exciting products. Lastly, we would like to thank you for your support of and trust in LEWIS. Now get out there and ride!

Safety Information

- Please read and review all information carefully before use and always follow the procedures stated in the User's Manual.
- Use caution when using a larger disc brake rotor as it provides a higher braking force.
- The disc brake rotor is sharp enough to inflict severe injury to your fingers if they come in contact with the rotating rotor.
- The brake may not work properly if the brake pads or rotor is contaminated with oil or grease.
- Stop using the brake if the disc brake rotor becomes worn down to it's thickness limit.
- If oil leaks occur, immediately stop using the brakes and consult your closest Lewis dealer.
- The wheel may lock if the front brake is applied too strongly, use caution.
- Braking distance may be longer in humid or wet weather.
- This brake is designed for downhill or free riding, with higher braking force compared to other brakes. If not familiar with this brake, accidents may occur that can cause serious injury or even death.
- If mineral oil comes into contact with eyes and skin, it may result in irritation. If in contact with eyes, rinse with water and receive immediate medical assistance. Inhalation of vapors or mineral oil mist may cause nausea.
- As the brake pads wear out use the bite point adjuster to account for this. Please also note more oil may need to be added to the reservoir.
- DO NOT modify this product, doing so will void the warranty.
- Please keep the User's Manual for future reference.

Safety Information

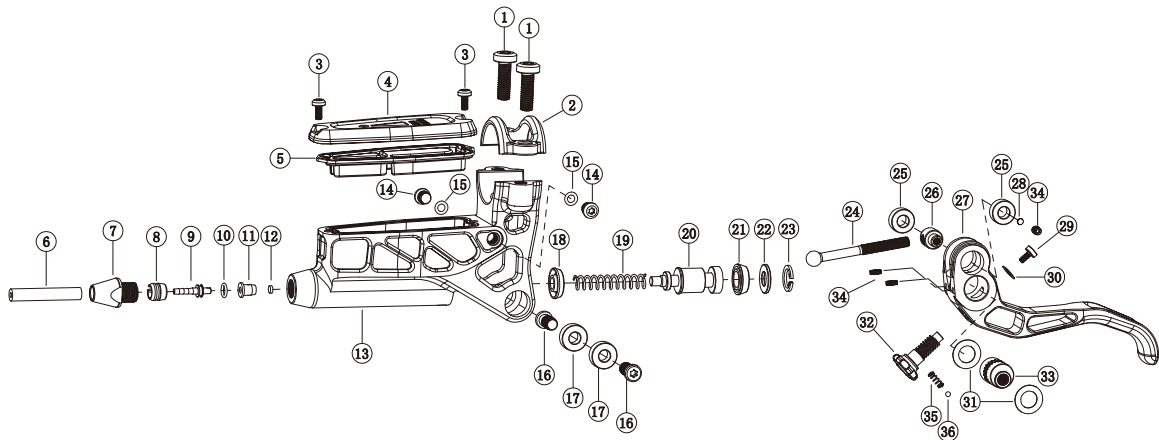
Check the following before riding the bicycle.

- Is the brake leaking oil?
- Do the front and rear brakes work correctly?
- Does each brake pad have a thickness of 0.5 mm or more?
- Is the disc brake rotor cracked or deformed?
- Are there any abnormal noises?
- Is the brake lever secure?
- Is the brake lever action smooth and solid?

If you notice any potential problem, please contact the place of purchase or a bicycle dealer.



EP8+ Brake Lever Diagram

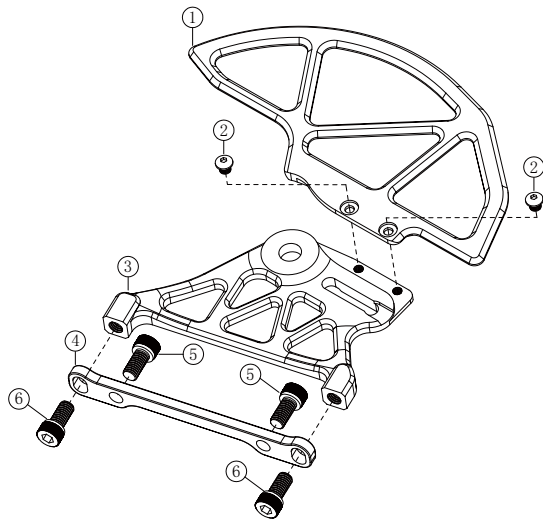


Serial No.	Component Name	Quantity	Serial No.	Component Name	Quantity	Serial No.	Component Name	Quantity
1	Clamp screw	2	17	Bearing	2	33	Turbocharger	1
2	Clamp	1	18	Piston seal	1	34	Fixing screw	2
3	screw	2	19	Piston spring	1	35	spring	1
4	Oil Reservoir cover	1	20	Piston	1	36	Steel ball	1
5	Diaphragm	1	21	Piston seal	1			
6	Hose	1	22	Retainer washer	1			
7	Oil hose connector	1	23	Circlip	1			
8	Detachable Olive Head	1	24	Piston rod	1			
9	Oil pin	1	25	Bearing	1			
10	O-RING	1	26	Piston rod rotating joint	1			
11	Tubing support sleeve	1	27	Lever blade	1			
12	Round magnets	1	28	Gasket	1			
13	Bracket	1	29	Screw	1			
14	Oil plug screw	2	30	Gasket	1			
15	O-RING	2	31	Gasket	2			
16	Lever blade fixing screws	2	32	Knob	1			

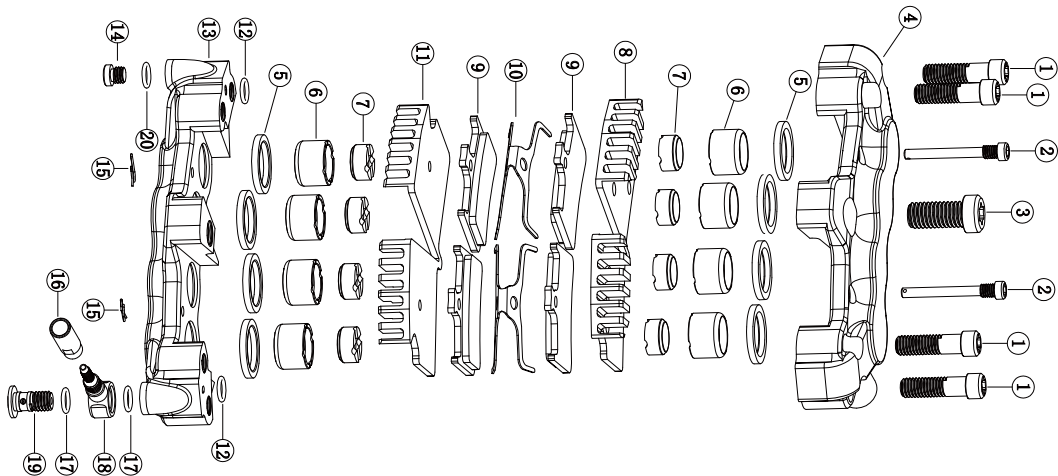
- It is not recommended for individual users to fully disassemble the brake lever. If necessary, please familiarize yourself with the components in the diagram, and use official disassembly videos as a reference.
- When disassembling and maintaining the brake, please use professional tools and cleaning agents. After cleaning, rinse thoroughly with running water to remove residual cleaning agents, and assemble after thorough drying.

EP8+ Adapter Diagram

Serial No.	Component Name	Quantity
1	Adapter C	1
2	Screw	2
3	Adapter D	2
4	Adapter B	1
5	Short screw	1
6	Long screw	1



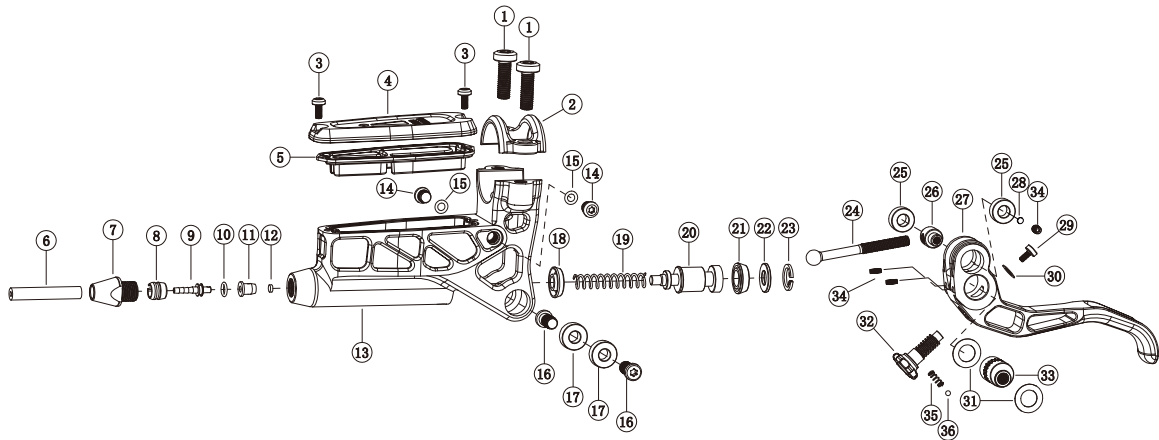
EP8+ Caliper Diagram



Serial No.	Component Name	Quantity	Serial No.	Component Name	Quantity
1	Lock screw	4	11	Lower cooling fin	1
2	Pad Pin	2	12	O-RING	2
3	Lock screw	1	13	Lower shell	1
4	Upper shell	1	14	Oil plug screw	1
5	Piston seal (14mm)	8	15	Pad Pin Clip	2
6	Piston (14mm)	8	16	Oil hose connector	1
7	Piston pad(14)	8	17	O-RING	2
8	Upper cooling fin	1	18	Oil hose connector	1
9	Pad	4	19	Oil plug screw	1
10	Pad spring	2	20	O-RING	1

- It is not recommended for individual users to fully disassemble the caliper. If necessary, please familiarize yourself with the components in the diagram, and use official disassembly videos as a reference. When assembling, remove any old sealing adhesive residue and use new cylinder seal grease for installation.
- When disassembling and maintaining the brake, please use professional tools and cleaning agents. After cleaning, rinse thoroughly with running water to remove residual cleaning agents, and assemble after thorough drying.

EP8+ Brake Lever Diagram

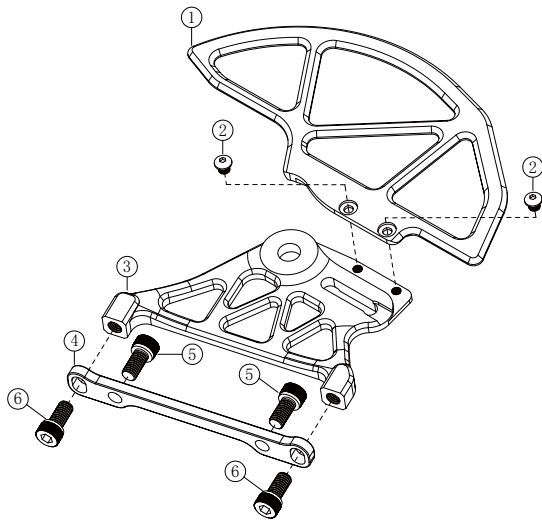


Serial No.	Component Number	Quantity	Serial No.	Component Number	Quantity	Serial No.	Component Number	Quantity
1	CLS36	2	17	FZ01051104F	2	33	CZK04	1
2	CSK07	1	18	CMF35_EPDM	1	34	FE29003030	2
3	FE32553080	2	19	CTH01	1	35	FQ01058010	1
4	CBT30	1	20	CHS26	1	36	FZ07008010	1
5	CMF18	1	21	CMF36_EPDM	1			
6	5.0*2.1HOSE	1	22	CDP11	1			
7	CJT09	1	23	CKH04	1			
8	CZT01	1	24	CZX21	1			
9	CGT01	1	25	FZ01051104F	1			
10	COX030615_EPDM	1	26	CZX02	1			
11	CZT02	1	27	CSB11	1			
12	FD09030010	1	28	FC03008010	1			
13	CBT35	1	29	FE20002050	1			
14	CLS30	2	30	FW01310030	1			
15	COX315512_EPDM	2	31	FW09081010	2			
16	CLS17_LV	2	32	CLS39	1			

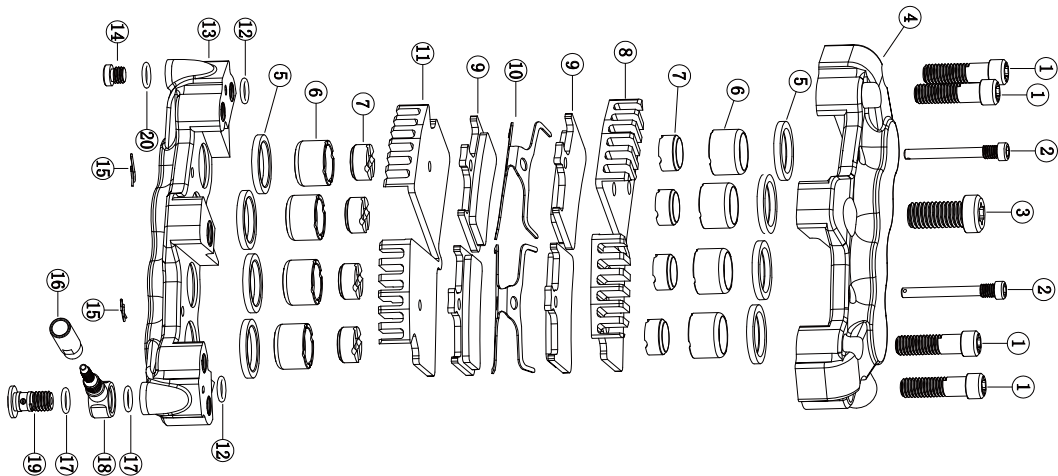
- It is not recommended for individual users to fully disassemble the brake lever. If necessary, please familiarize yourself with the components in the diagram, and use official disassembly videos as a reference.
- When disassembling and maintaining the brake, please use professional tools and cleaning agents. After cleaning, rinse thoroughly with running water to remove residual cleaning agents, and assemble after thorough drying.

EP8+ Adapter Diagram

Serial No.	Component Number	Quantity
1	CZH03	1
2	FE25040506	2
3	CZH04	2
4	CZH02	1
5	FE25020814	1
6	FE25020816	1



EP8+ Caliper Diagram



Serial No.	Component Number	Quantity	Serial No.	Component Number	Quantity
1	CLS33	4	11	CRP02	1
2	CLS34	2	12	COX560812	2
3	CLS40	1	13	CBT32	1
4	CBT31	1	14	CLS30	1
5	CMF05_EPDM	8	15	CTH09	2
6	CHS11	8	16	CJT03	1
7	CCT02	8	17	COX315512	2
8	CRP01	1	18	CJT02	1
9	EP-37	4	19	CLS02_17	1
10	CTP01	2	20	COX315512_EPDM	1

- It is not recommended for individual users to fully disassemble the caliper. If necessary, please familiarize yourself with the components in the diagram, and use official disassembly videos as a reference. When assembling, remove any old sealing adhesive residue and use new cylinder seal grease for installation.
- When disassembling and maintaining the brake, please use professional tools and cleaning agents. After cleaning, rinse thoroughly with running water to remove residual cleaning agents, and assemble after thorough drying.



LEWIS

**ALL FOR
CYCLING
EXPERIENCE**

POWERED BY:



Website: www.lewisbike.com

